

The Local Offer

This flyer provides an overview of the Local Offer and who to contact if you would like to be involved or you would like any further information.



What is the Local Offer?

From September 2014 Cheshire West and Chester Council must provide a Local Offer for children and young people with Special Educational Needs and Disability (SEND).

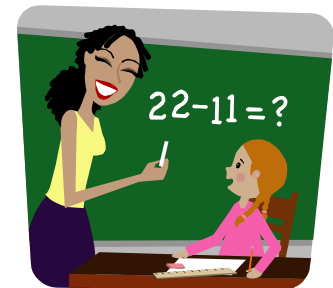
It's where you will find information and services in one place. There will be details of services that are available within the local area and how to access them as well as services that are not in our area but that you may also be able to access.

What will be included?

The Local Offer will include information on:

Education

- Information about schools and colleges and how they can support
- Information about how to request an assessment for an Education, Health and Social Care plan (EHC plan).
- Support for preparation when leaving school, including accessing college, university, employment or training, volunteering, independent living, etc..



Health

- Information about health services and how to access them
- Support moving to children's health services to adult health services



Social Care

Information about social care services and the support they can provide including:

- Support when moving from children's social care to adult social care and when this will happen
- Support to live independently
- Information on Leisure activities including short breaks



SEND Reforms



Cheshire West and Chester

Planning for the future

What else will be included?

- Information about training and apprenticeships
- Information about transport and the services available
- What support is available to you for finding employment
- What financial support is available to you
- Accessing college post compulsory education
- Volunteering opportunities
- Information about personal assistants
- Information using the internet safely
- Information on personal budgets
- Childcare, Activities
- And more...

Some examples of ways the offer will be accessible

The Local Offer will be available in a range of formats including translation into a different language, larger fonts, coloured backgrounds, sign language, information read aloud.

What work are Cheshire West and Chester Council currently doing?

- We are working with colleagues in adult's services so that customers can access information in one place, this will include The Local Offer and the requirements of the forthcoming Care and Support Act.
- We are developing The Local Offer including the feedback you have previously given us
- We are developing the content of our service directory, activities and information hub

How can you help us?

Do you know of or use a service or any information that you would like included for other people to access? Please let us know.

Your voice

From September 1st 2014 the Local Offer will be available electronically. It will not be perfect, this is the beginning, we need you to tell us what you think about The Local Offer, how easy was it to find what you were looking for? Do you have any suggestions on how we could improve The Local Offer? Are there services that you think are missing that you would like to be available locally?

We will reply to your feedback, it will help us to review the information included in The Local Offer and to make improvements, your views will also be provided to commissioners who decide what services are available in the local area.

**If you would like to be involved or require any further information please contact:
Emma Walker**

☎ Telephone: 01244 973829

✉ E-mail: emma.walker@cheshirewestandchester.gov.uk

📍 Address: Room 237, The Forum, Chester,
CH1 2HS

SEND Reforms



**Cheshire West
and Chester**

Planning for the future