



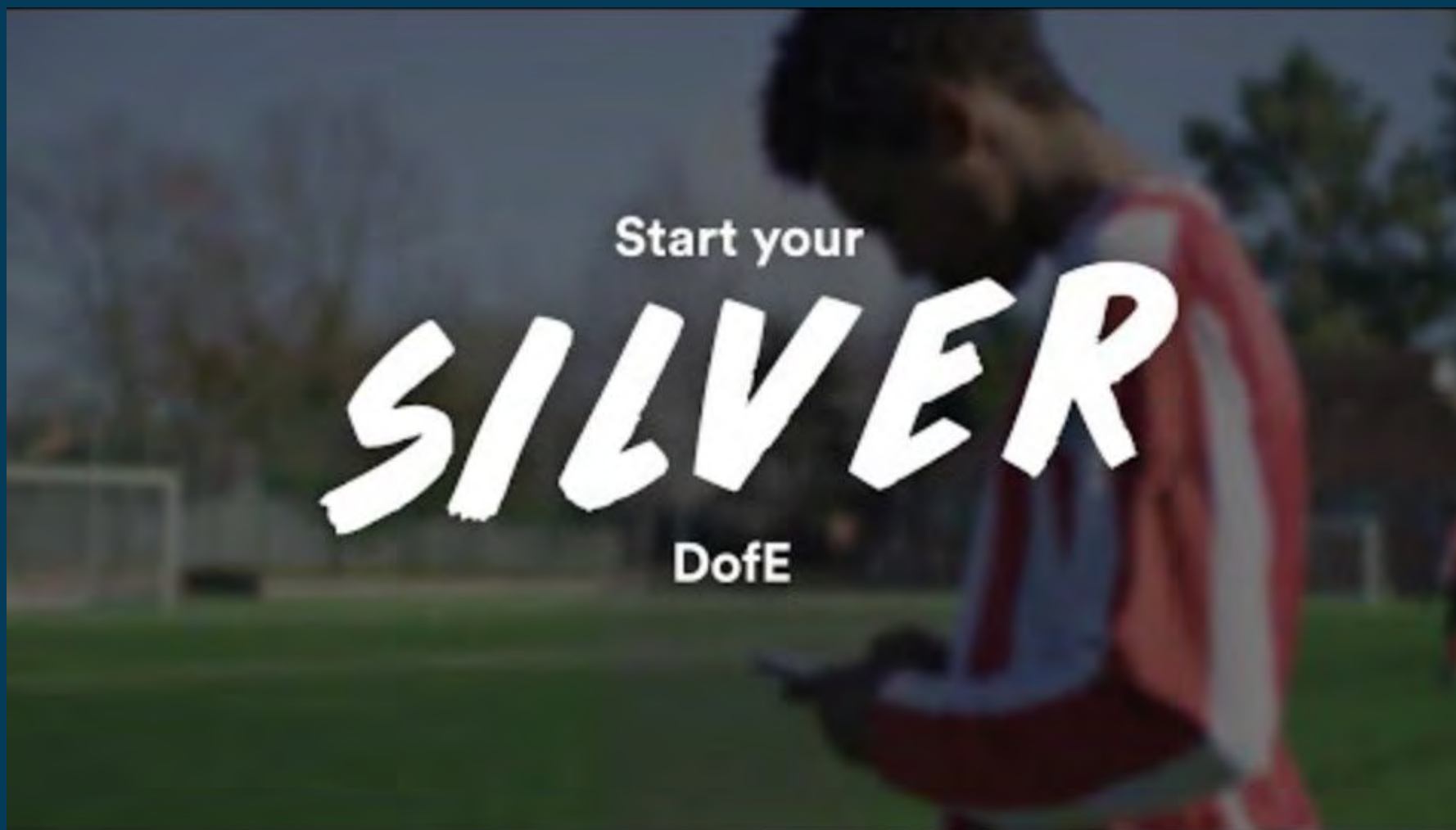
# Silver DofE Information Evening

Tarporley High School & Sixth Form College



# Silver DofE Information Evening

## Tarporley High School & Sixth Form College



# Silver DofE

- ***START YOUR JOURNEY NOW. YOU DO NOT HAVE TO HAVE DONE BRONZE!!!***
- **The DofE is a life-changing adventure.**
- **Valued by employers and universities**
- **Demonstrates transferable skills**
- **Learn self-motivation, organisation, teamwork & resilience**





# What will I do?

6 – 6 – 3

SILVER AWARD			
VOLUNTEERING	PHYSICAL	SKILLS	2 x EXPEDITION
6 months	6 OR 3 months	6 OR 3 months	3 days 2 nights

Physical and Skills sections: one section for 6 months and the other section for 3 months

If you didn't do BRONZE, you must do a further 6 months in either the Volunteering or the longer of the Physical or Skills sections.

Choose activities which  
tie into your life / future!  
Business – enrichment  
club

Art – art enrichment

Medicine – first aid  
course

Doing an activity that ties  
into your career plans  
enables you to  
demonstrate more  
applicable skills than the  
competition!

Ubee courses  
here.

All Courses, Life Skills, Media Skills, Three Month  
Skills Section Courses

DofE Three Month Skills Course:  
Design and Build a Website

98 Lessons

£59.00

**How To:  
Design and Build  
Your Own Website**

All Courses, Life Skills, Learning and Collecting, Three  
Month Skills Section Courses

DofE Three Month Skills Course:  
Learn First Aid Skills

99 Lessons

£59.00

**LEARN  
FIRST AID  
SKILLS**

Skills Section Courses

DofE Three Month Skills Course: The  
Evolution of the Supercar

107 Lessons

£49.00

**The Evolution of the  
Supercar**

# Volunteering

- Enrichment at school
- Support primary PE events
- Supporting younger sports teams / coaching
- Local community council
- Park run
- Scouts
- After school clubs
- Sanctuaries
- Charity shops / café
- Chester Zoo
- Zooniverse



**YOUTH  
WITHOUT  
LIMITS**





# Training & Expedition

All training & expeditions are during the usual school day!

(Check this is NOT a family holiday!)

27 <sup>th</sup> – 28 <sup>th</sup> March	Training Days
14 <sup>th</sup> – 16 <sup>th</sup> May	Practise expedition
30 <sup>th</sup> June – 2 <sup>nd</sup> July	Qualifier expedition



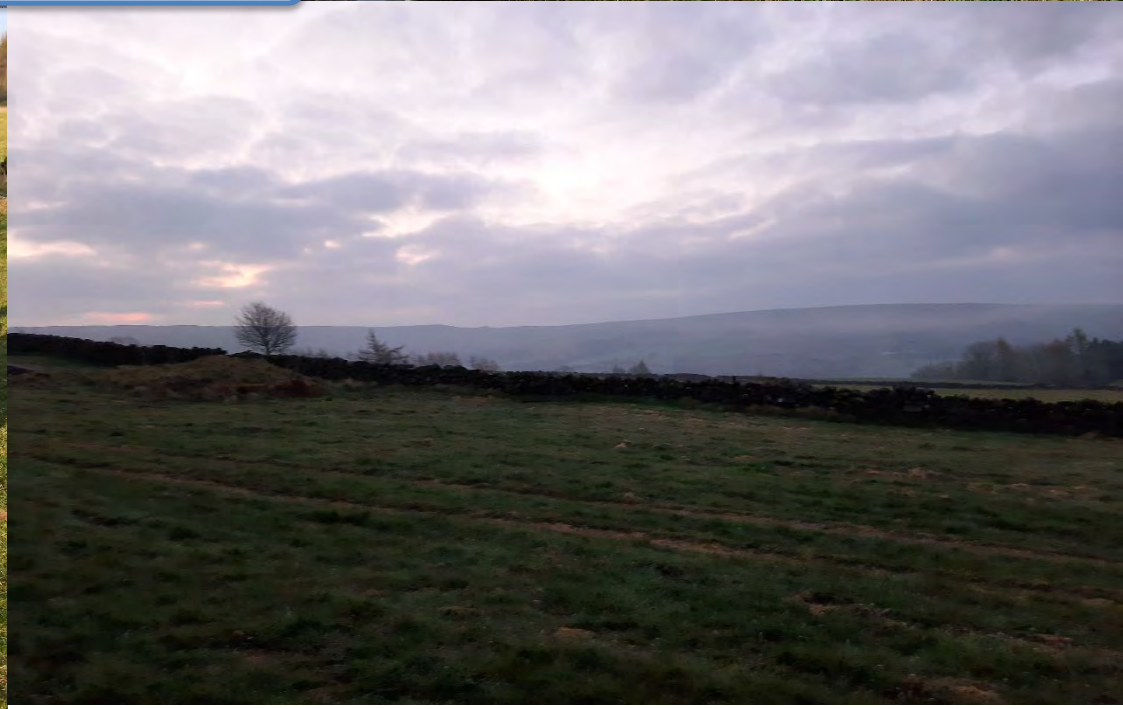
**YOUTH  
WITHOUT  
LIMITS**







Practise in Peak District








Practise in Peak District







Qualifier in the  
Shropshire Hills







# Parental role

## Guidance

- Provide guidance and support on activities, kit and Assessor choices.

## Encouragement

- It can be challenging to keep the motivation going, especially over some of the longer timeframes.

## Expedition support

- You may be required to drop off/collect from expeditions... and also wash the kit when it comes home!

## Reminders

- Keep them on track with their activities, particularly those which are being done from home.

## Recognise their achievements

- We hope all organisations will recognise the amazing achievement, and it is just as important to receive that recognition from family members.





# Cost



The cost of the Silver Award is £497.

This is made up from:

- Cost of registration with the DofE £28 & a £5 admin fee
- Training & route planning days £116
- Practice expedition (three days and two nights) £174
- Qualifying expedition (three days and two nights) £174
- Maps, tents, stoves and fuel are provided.

Travel to and from the event is not included.

Enrolment with deposit by 7<sup>th</sup> October 2024

# Learn Outdoors



On Silver DofE expeditions with Learn Outdoors your child will get:

- A team who are a passionate about helping your child achieve their expedition element of the DofE Award.
- High quality training and expeditions planned and implemented by us.
- Highly experienced instructors who hold the Mountain Training qualification, have specific first aid training and are DBS checked
- Expert training in pre-expedition preparation which includes route planning, navigation, kit and food choices.
- Bespoke expertise according to the needs of the school and individuals.
- Loan of high-quality tents and stoves which are cleaned and checked after each use.
- Camp fees included in the price.
- A 'Tips for Success' pdf training booklet which was highly rated as an example of best practise during our most recent AALA inspection.
- Expert on the ground supervision and use of tracker technology as an additional safety tool.
- A team with an excellent safety record, who maintain robust operating procedures and are continuously striving for improvement.

In addition, Learn Outdoors has a dedicated office team providing pre and post-expedition support. Learn Outdoors are a DofE Approved Activity Provider (AAP) and have been working closely with Tarporley High School since 2011.

We are regularly inspected and hold an Adventure Activities Licensing Authority (AALA) licence which provides assurance that we meet the required safety standards



# Why do the DofE?



Being part of the Duke of Edinburgh's Award process is not just about gaining the award itself but rather provides skills and experiences that many pupils benefit from in the long-term future such as:

**90%** of young people said doing their Duke of Edinburgh has given them opportunities to help others.

**82%** noted their Duke of Edinburgh has made them want to continue with volunteering/voluntary activities.

**62%** feel that doing their Duke of Edinburgh has helped them make a positive difference to their local community.

**74%** of young people said they developed self-esteem.

**64%** feel that as a result of Duke of Edinburgh they are better at sport or physical activity.

**74%** of young people said it allowed them to try activities they would never have tried before.

**71%** of young people identified improved self-belief.



*"As an actor I know how much Award holders' experiences and the skills they've developed matter. Without determination and passion I wouldn't be where I am today."*

**Benedict Cumberbatch**, actor.



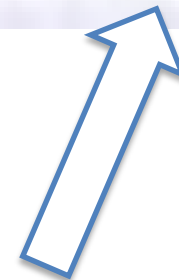
*"Life doesn't naturally happen, you've got to get involved. What better way to do that than do your DofE. As an employer I want to work with people who have a range of skills and can see things through."*

**Deborah Meaden**, entrepreneur and Dragons' Den investor

# Planning on leaving it till Gold?

Gold (age 16+)	Volunteering	Physical	Skills	Expedition	Residential
	12 months	12 or 6 months	12 or 6 months	4 days 3 nights	5 days 4 nights
Physical and Skills sections: one section for 12 months and the other section for 6 months					
If you didn't do Silver, you must do a further 6 months in either the Volunteering or the longer of the Physical or Skills sections.					

You will be just adding your Silver time onto your Gold at a time when you are under more time pressure?



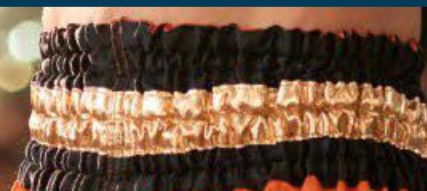




**YOUTH  
WITHOUT  
LIMITS**



Any Questions?



Silver DofE Information Evening

Tarporley High School & Sixth Form College